



*Fine Detail, High Impact...*

### At the Core of Design

- Generating Innovative Ideas
- Bringing the idea to life
- Making the idea work for you



### The World Around Design

- Taking your place in the market
- Being the target of your target market
- Having the Competitive edge



### What it's All About

- We are capitalising on a concept
- watching it grow
- And maximising profit



### OUR STRATEGY BEHIND BRANDING

- We are service orientated
- We assess our client's targeted market
- We house a team of creative experts that ensures our client's CI standards are upheld

- Our client's Brand image is just as important to us as it is to them
- Work together with our client to create/select the Design, that will perfectly relay our client's message.
- Overall, we are a 360 Branding home

\* Order your 2015 Diaries & Calendars Now!

**A4 Folders and Diaries**

Position A & B  
1. Deboss (BOS)  
Size: 100mm wide x 60mm high

2. Foil (FL) - Silver or Gold  
Size: 60mm wide x 20mm high

Debossing

**Litho Printing**

Position A  
1. Litho Printing

Litho Printing

**Diaries**

Position A  
1. Foiling - 1 colour  
Size: 100mm wide x 120mm high

Foiling

**UV Varnish**

Position A  
1. Spot UV Varnish

UV Varnish

**ANNUAL REPORTS**

Position A  
1. Digital Printing on A4 Books  
Size: 210mm wide x 295mm high

Digital Printing

**Embossing**

Position A  
1. Embossing

Embossing

### In the Industry of Print

- A3-size digital presses (full colour as well as black & white)
- A1-, A2- and A3-size full colour lithographic presses
- Ability to apply aqueous coating in-line with the printing process



### Understanding All that's Technical

- Paper type
- Size
- Colour
- Quantity



### Finishing Touches

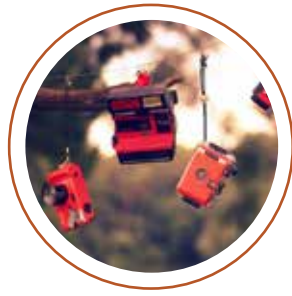
- Adding the Print Finishes:
  - Scolding
  - Foiling
  - Debossing
  - UV Varnish
  - Embossing



We also do:



Indoor & Outdoor  
Branding



Photography



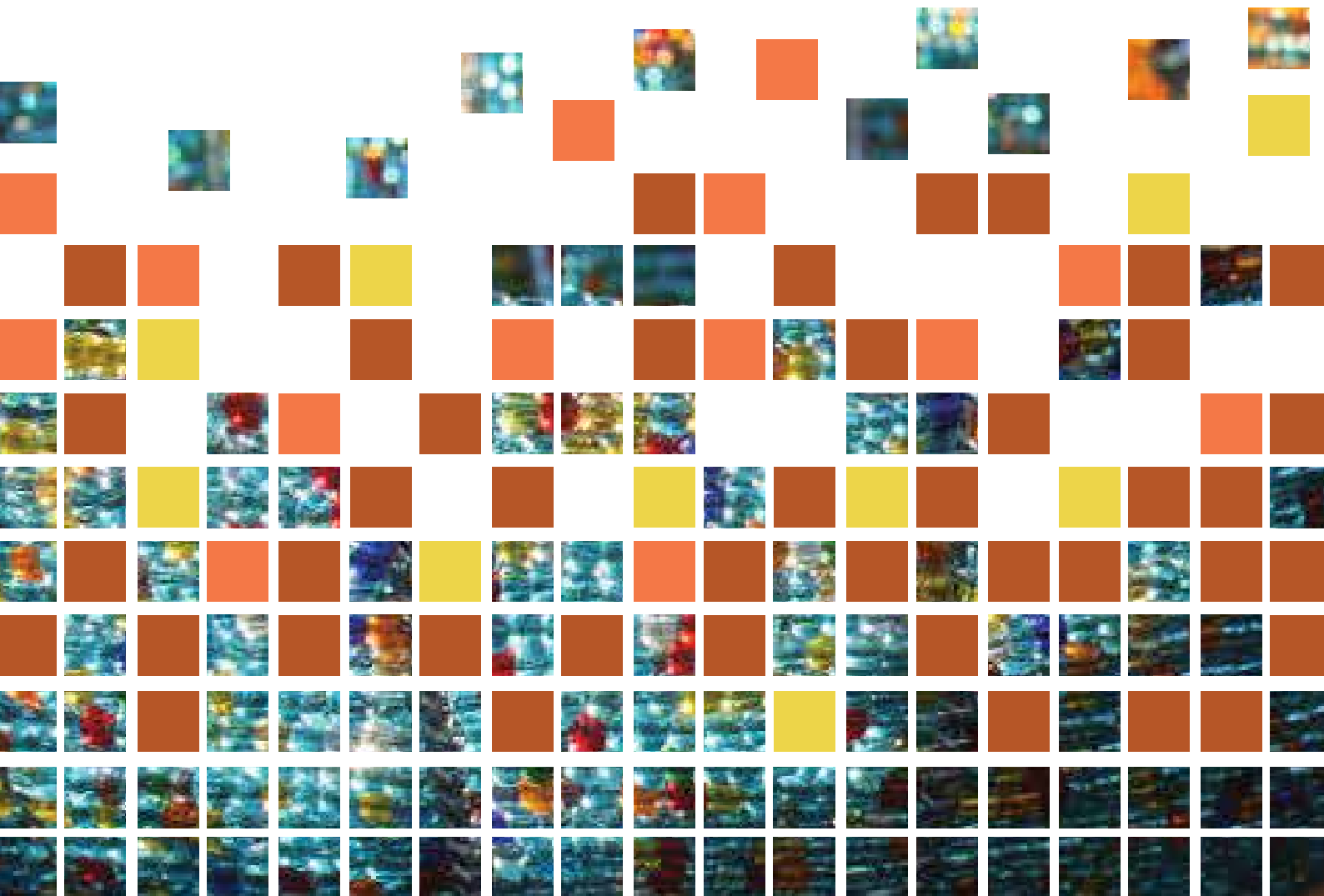
Corporate Gifts  
& Clothing



Mass Printing

# Bra's Ba *Legae*

Through this program Legae seeks to marry the branding needs of big business and that of poverty stricken communities to create a comprehensive Corporate Social Investment program that attacks the problems of these communities at root level and has on going sustenance from the realistic investments received from big business.



Contact Us: Mobile: 072 776 9568 | Tel: +27(0)11 079 3634 | Fax: 086 610 8752 | 5 New road,  
New road office park, Midrand | 1685

[www.legae.net](http://www.legae.net)